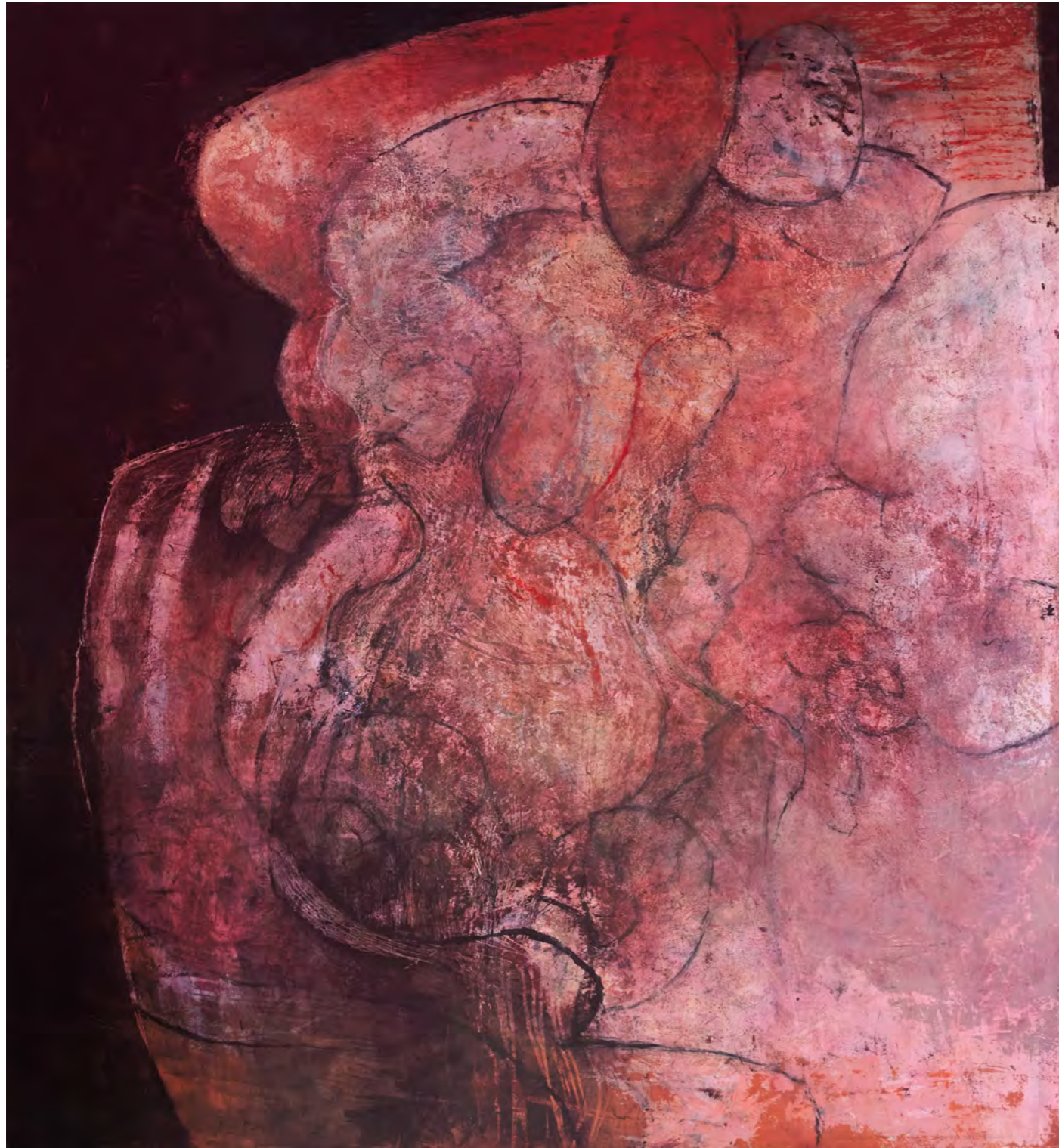


An abstract painting featuring a woman's face and upper torso. The face is rendered with soft, blended colors of pink, blue, and grey, with dark outlines. The body is depicted with bold, expressive brushstrokes in shades of red, orange, and brown. The overall style is gestural and textured, with a focus on color and form over realistic detail.

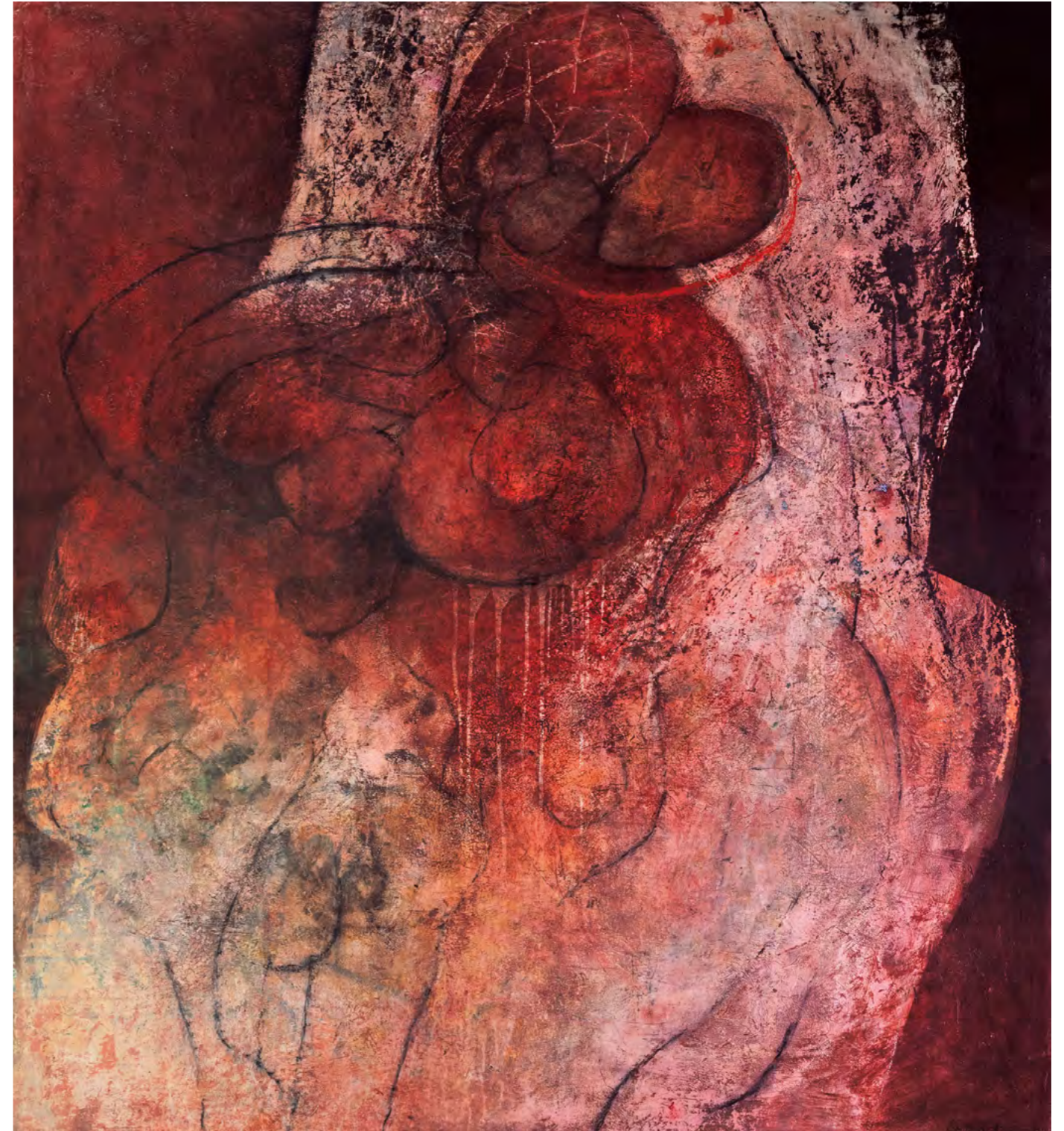
*She is woven into the  
Mystery*

KYM BARRETT

**c a** GALLERY



*Excavation Site 1*  
Oil, oilstick and cold wax medium on board  
122 x 112 cm  
\$5,500



*Excavation Site 2*  
Oil, oilstick and cold wax medium on board  
122 x 112 cm  
\$5,500

When I start a painting, I don't know what the outcome will be. I aim for qualities that I want the work to embody, like depth, a richly nuanced surface, and an intentional obscurity. My painting process is intuitive. Surfaces are built up and carved into, veiled and unveiled, until it feels right. It's always a dance between structure and freedom.

For a long time, what emerged was an abstracted landscape, something reminiscent of place.

Lately, a figurative element has appeared.

What is this? Where did it come from?

Why is it showing up now?

The answers are as mysterious as the process of making.

Was it a tip-off about my imminent breast cancer diagnosis and the need for healing? Is it a clue about being more present in the body? A reminder that the body is a vessel for Spirit? Or is it because I'm again drawing from a life model? Or ... all of the above.

I don't know. I'm still curious.

I'm trying to make sense of the evolving organic feminine forms as they become entwined into landscapes or claim their own personal space.

I like to ask big Life questions too.

What is consciousness? What does it mean to be human? What is the purpose of suffering?

For me, these are mysteries, not problems.

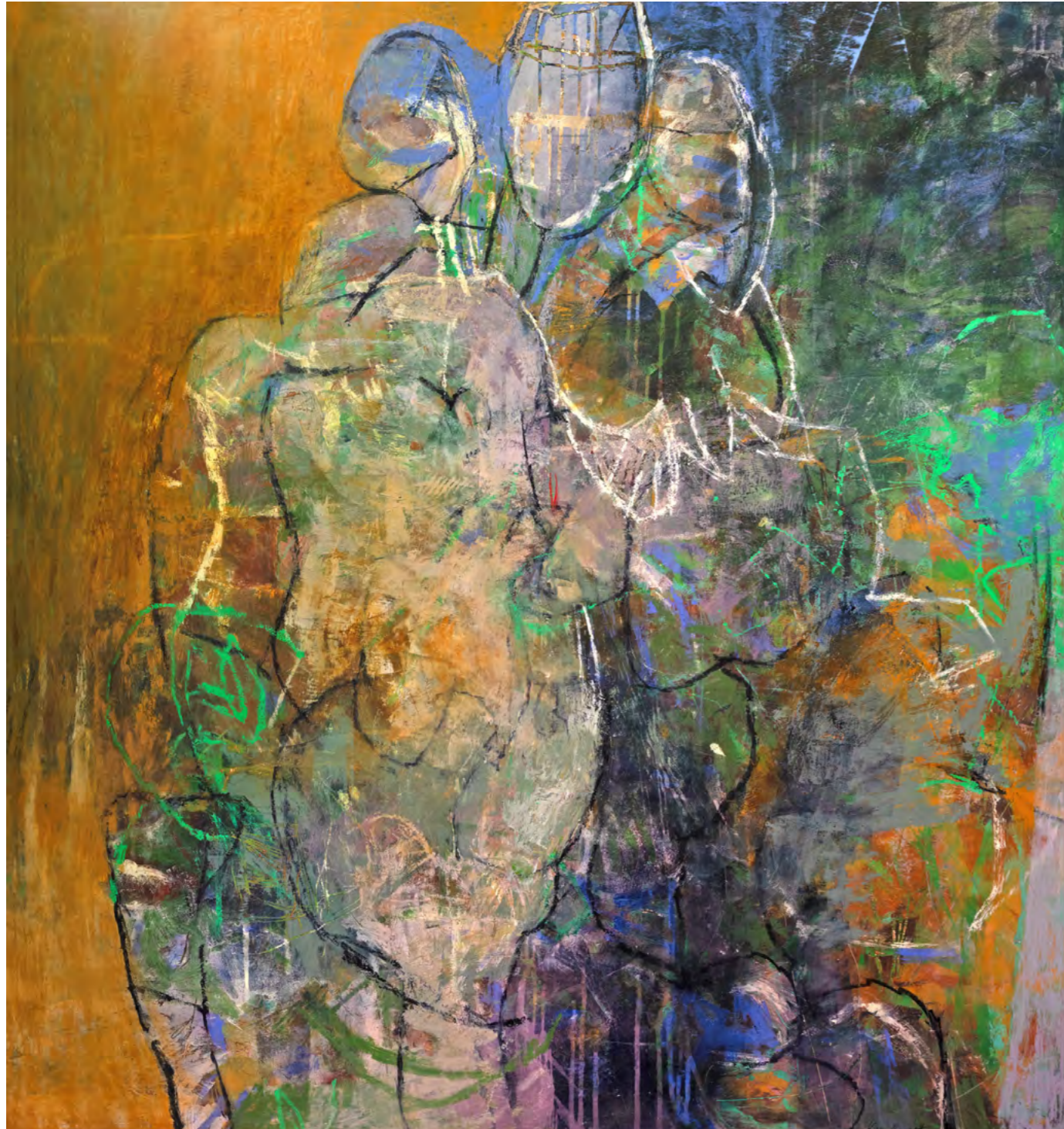
My very Self and everyone's Self is intimately woven into the Mystery of Being. And Mystery is ultimately undefinable. It's always the Big Unknown. I'm learning to be comfortable with this uncertainty, and with the elusiveness of the painting process too.

What comes to light in my work is my shadowy story, and when I'm telling my story, I'm telling everyone's story. Make of it what you will.

I'm inviting you to pause and ask your own big questions. Or be moved by something mysterious, or the scrumptious surface or simply the aesthetics of a piece.

Rumi (13th century Sufi mystic) said,  
'You are not a drop in the ocean. You are the mighty ocean in a drop.'

Kym Barrett, 2026



*A Triple Unity*  
Oil, oilstick and cold wax medium on board  
132 x 122 cm  
\$5,800



*Mother Sophia (wisdom)*  
Oil, oilstick and cold wax medium on board  
112 x 122 cm  
\$5,500



*A Tender-hatted Presence*

Oil, oilstick and cold wax medium on board

122 x 112 cm

\$5,500



*Solidarity with Suffering*

Oil, oilstick and cold wax medium on board

132 x 112 cm

\$5,800

## ABOUT KYM BARRETT

Kym Barrett has lived and worked in Chatsworth, south-east Queensland for over 45 years. She graduated in Fine Arts (painting and drawing) from the Brisbane College of Art (now QCA) in 1975 and has held twenty-two solo exhibitions.

Kym was the 2022 Bundaberg Art Prize winner, the 2021 Flying Arts Queensland Regional Arts Award winner and has won many other Queensland Art Awards.

She has been a finalist in twenty Queensland prizes and a finalist in five national awards since 2015. Her work is in the Bundaberg Regional Art Gallery Landscape Collection, Greenslopes Private Hospital, Sunshine Coast Regional Council Art Collection and Moreton Bay Regional Council Art Collection as well as in numerous private collections.

Kym currently creates abstract paintings that are process driven and which, whilst exhibiting rich luminosity and depth are intentionally open-ended, describing something out of reach but also the artist's journey to a deeper ground.

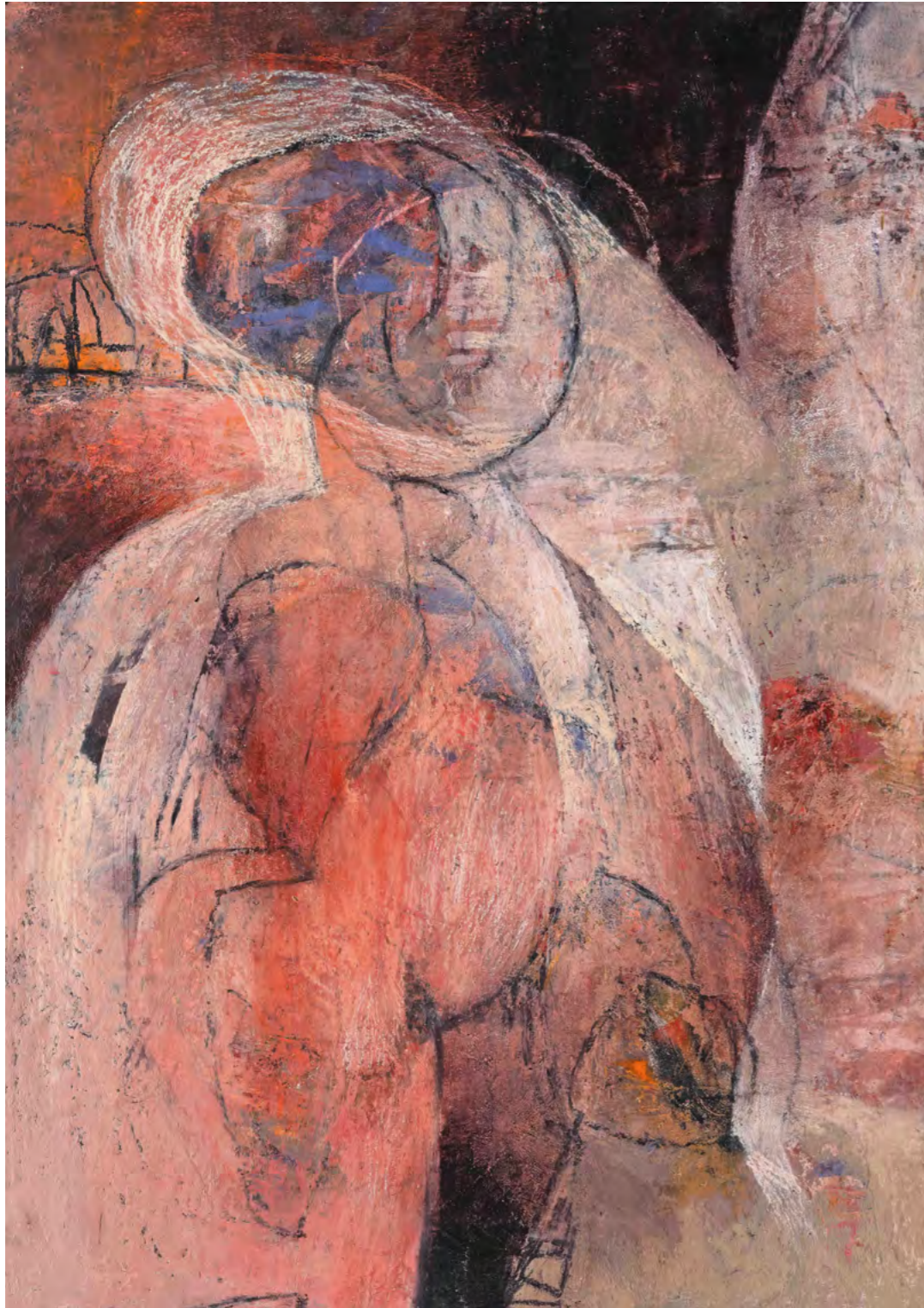




*Slumber Scape (above)*  
Oil and cold wax medium on polyester canvas  
60 x 190 cm  
\$4,800



*The Land of Nod (below)*  
Oil and cold wax medium on polyester canvas  
60 x 190 cm  
\$4,800

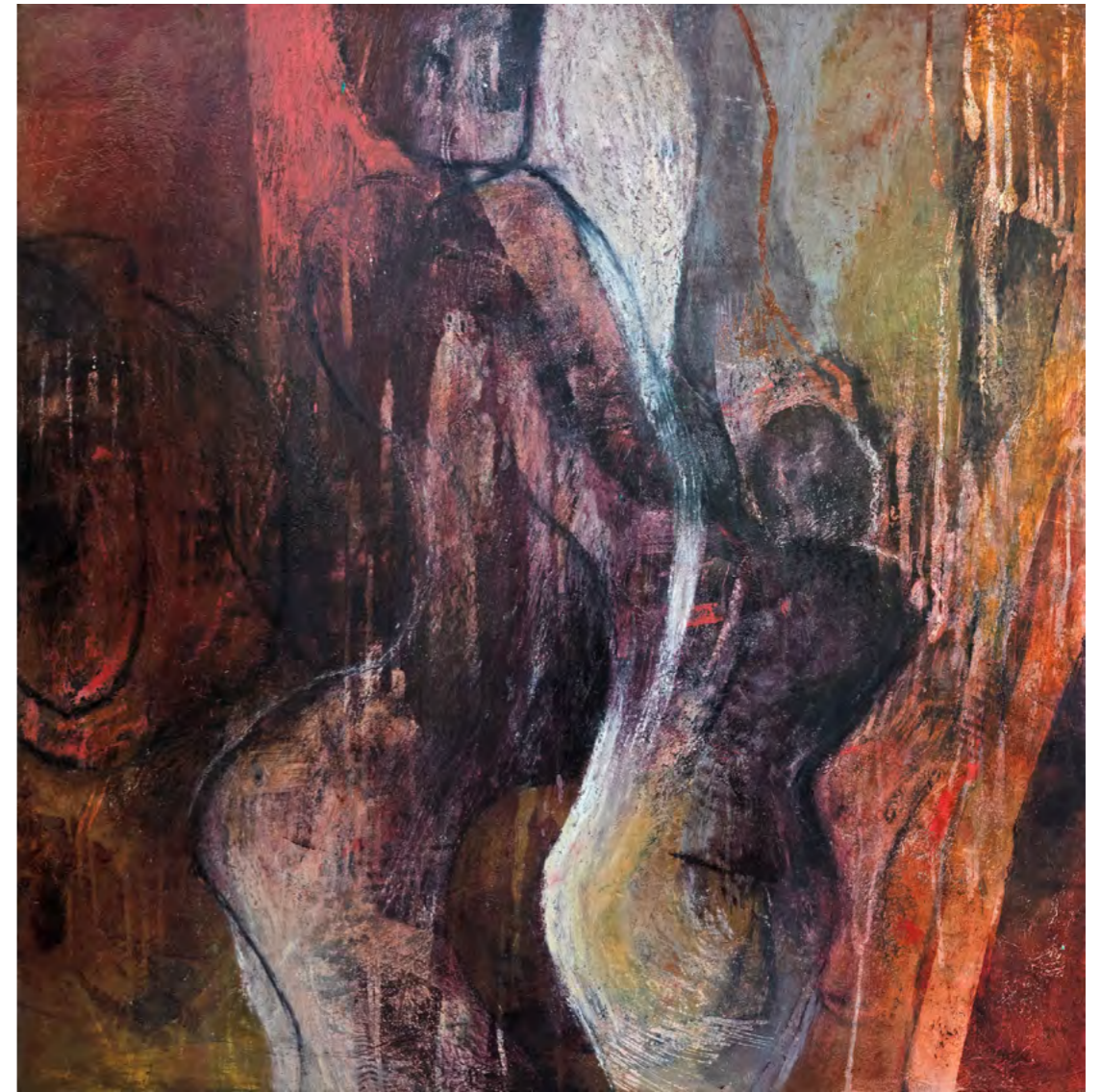


*Cloaked in Light*

Oil, oilstick and cold wax medium on board

86 x 60.5 cm

\$2,500



*To know the dark, go dark*

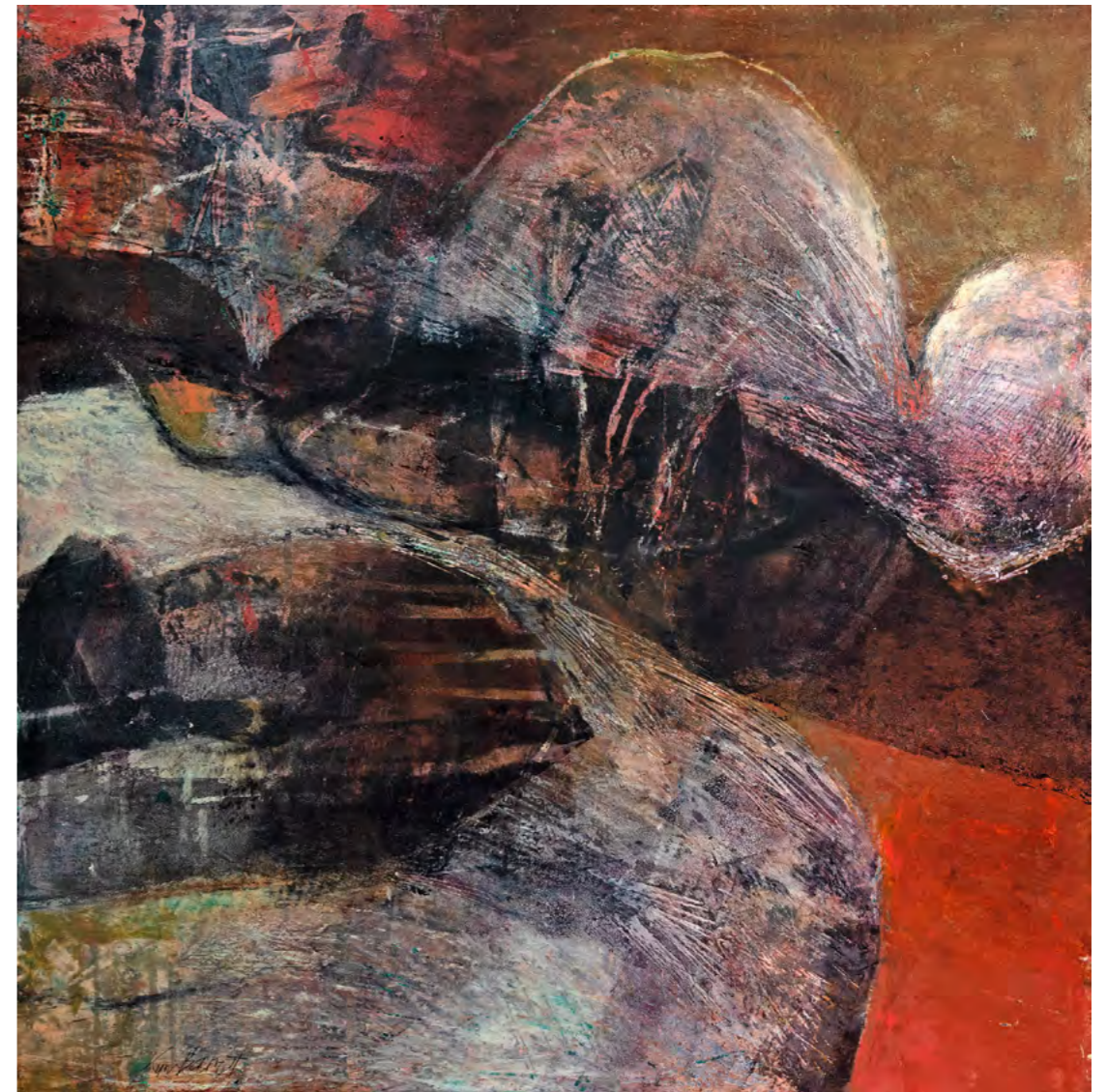
Oil and cold wax medium on board

72 x 72 cm

\$2,500



*The dark too, blooms and sings*  
Oil and cold wax medium on board  
51.5 x 72 cm  
\$2,200



*Travelled by dark feet*  
Oil and cold wax medium on board  
52 x 52 cm  
\$1,850



*Nestled in*  
Oil and cold wax medium on polyester canvas  
78 x 96 cm  
\$3,200



*Bodying forth*  
Oil and cold wax medium on board  
38.5 x 56 cm  
\$1,500



*Wedded to the wild*  
Oil and cold wax medium on board  
42 x 52 cm  
\$1,500



*She is woven into the mystery*  
Oil and cold wax medium on board  
42 x 52 cm  
\$1,500



*Naked landscape*

Oil and cold wax medium on board

31 x 41 cm

\$1,250



*Embodied at night*

Oil and cold wax medium on board

31 x 41 cm

\$1,250



*The tears of things*  
Oil and cold wax medium on canvas  
65 x 47 cm  
\$2,100



*Tears 1 & Tears 2*  
Oil and cold wax medium on board  
32 x 23 cm each  
\$890 each



*She*  
Oil and cold wax medium on board  
32 x 32 cm  
\$1,100



*Her*  
Oil and cold wax medium on board  
32 x 32 cm  
\$1,100



*Floral Body*

Oil and cold wax medium on paper  
92 x 70 cm, framed under glass  
\$1,800



*Embodied 1*

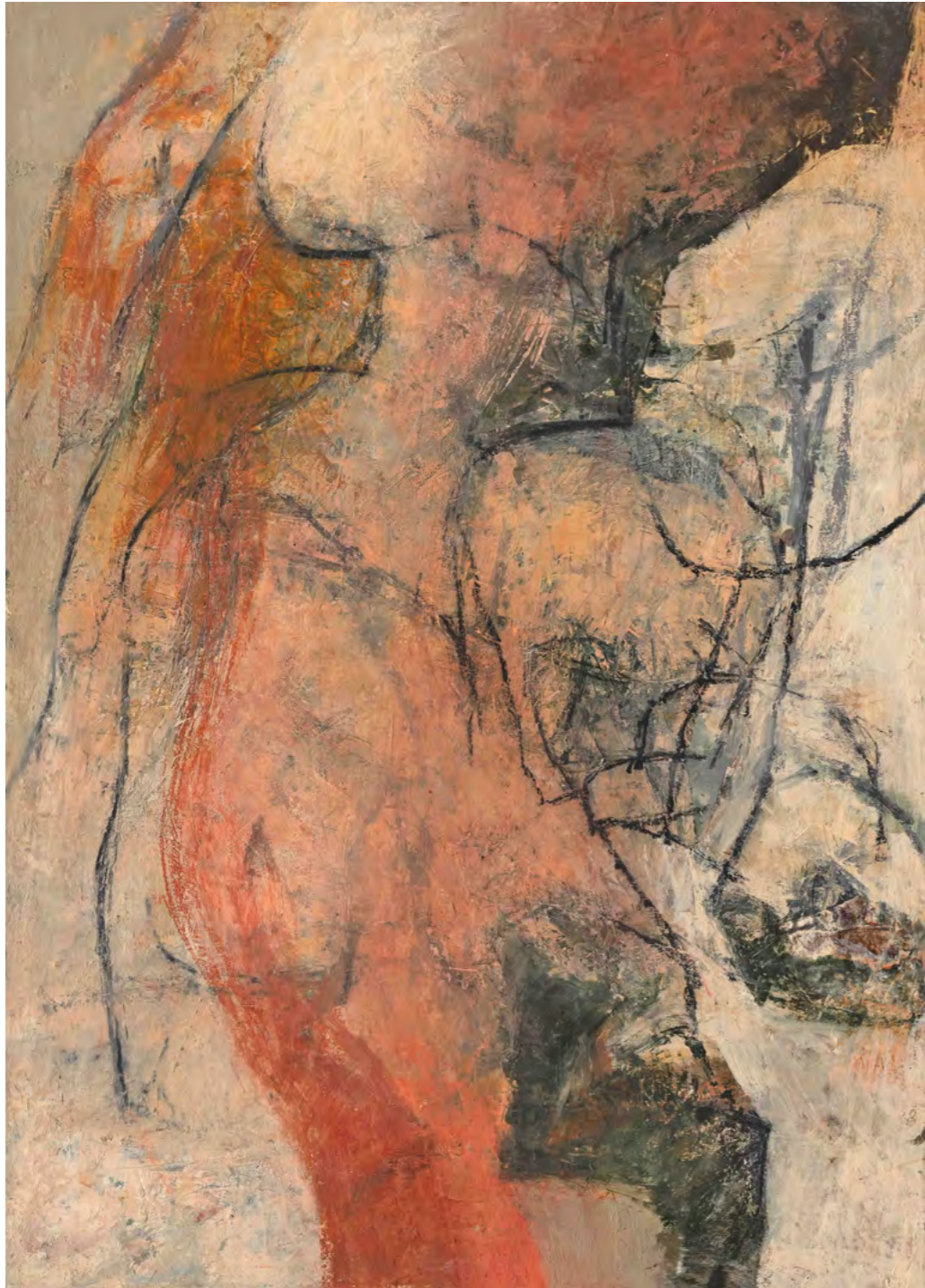
Oil and cold wax medium on paper  
78 x 58 cm, framed under glass  
\$1,500



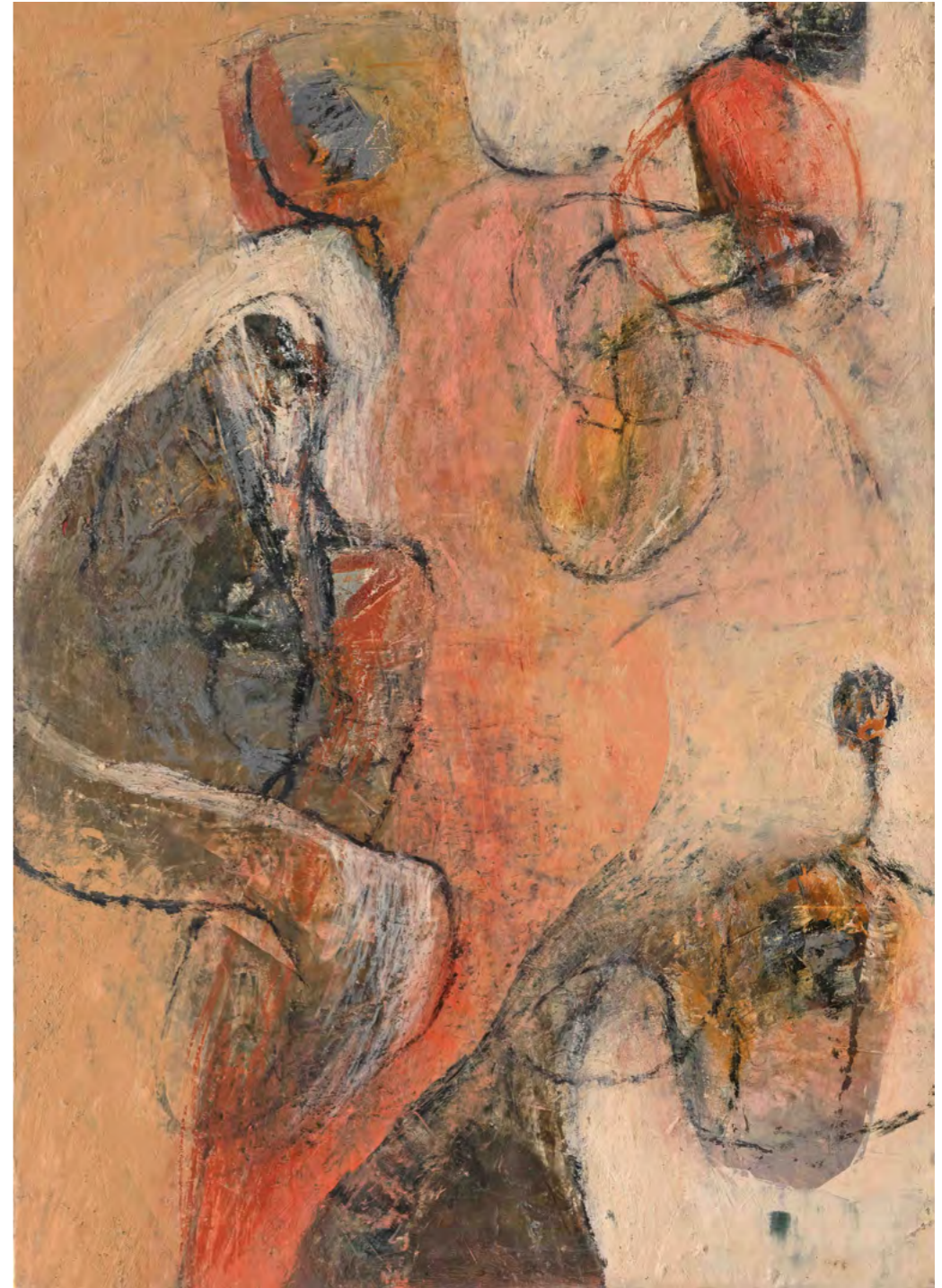
*Embodied 2*  
Oil and cold wax medium on paper  
78 x 58 cm, framed under glass  
\$1,500



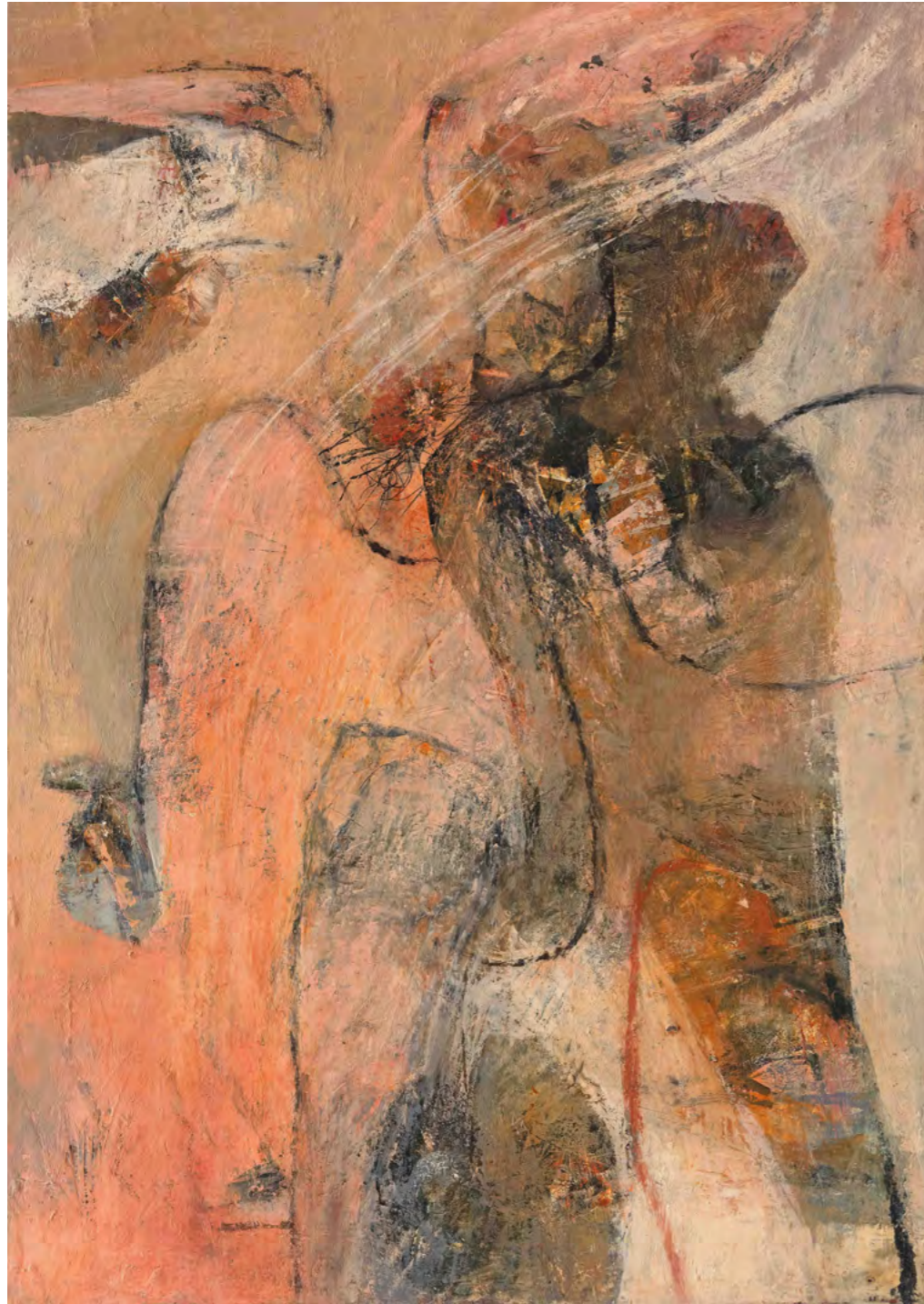
*Embodied 3*  
Oil and cold wax medium on paper  
78 x 58 cm, framed under glass  
\$1,500



*Tapping into Eros 1*  
Oil and cold wax medium on canvas  
70 x 50 cm  
\$2,200



*Tapping into Eros 2*  
Oil and cold wax medium on canvas  
70 x 50 cm  
\$2,200



*Tapping into Eros 3*  
Oil and cold wax medium on canvas  
70 x 50 cm  
\$2,200

*She is woven into the  
Mystery*

KYM BARRETT

2 - 22 JUNE

OPENING NIGHT  
SATURDAY 6TH JUNE  
4 - 6 PM

**ca** GALLERY

5/43 Access Crescent  
Coolum Beach QLD 4573 Australia  
T: 61 7 5471 7366  
E: [art@coolartgallery.com.au](mailto:art@coolartgallery.com.au)  
[www.coolartgallery.com.au/gallery](http://www.coolartgallery.com.au/gallery)

Artwork photography by Christine Hall  
All artworks copyright to the artist  
All artworks subject to availability